

Tusk Quiet Glide Skid Plate Polaris Pro R 4 Seat

Part# 1276440044

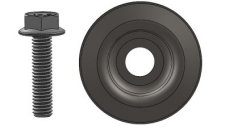


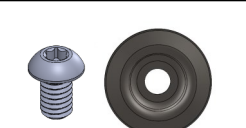
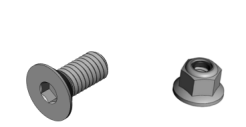
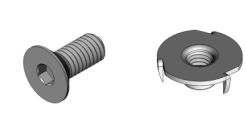
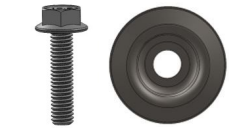


TUSK

Thank you for purchasing the Tusk Quiet-Glide Skid Plate. Please read through the instructions from start to finish before you begin the install. Become familiar with the hardware diagram below and installation steps. Refer back to this page throughout the entire installation process. This chart will identify the hardware combinations required for each mounting location of the skid plate. If you are not comfortable or lack the tools needed to perform the install properly, it is recommended that you take the skid plate and your machine to a qualified mechanic for installation.

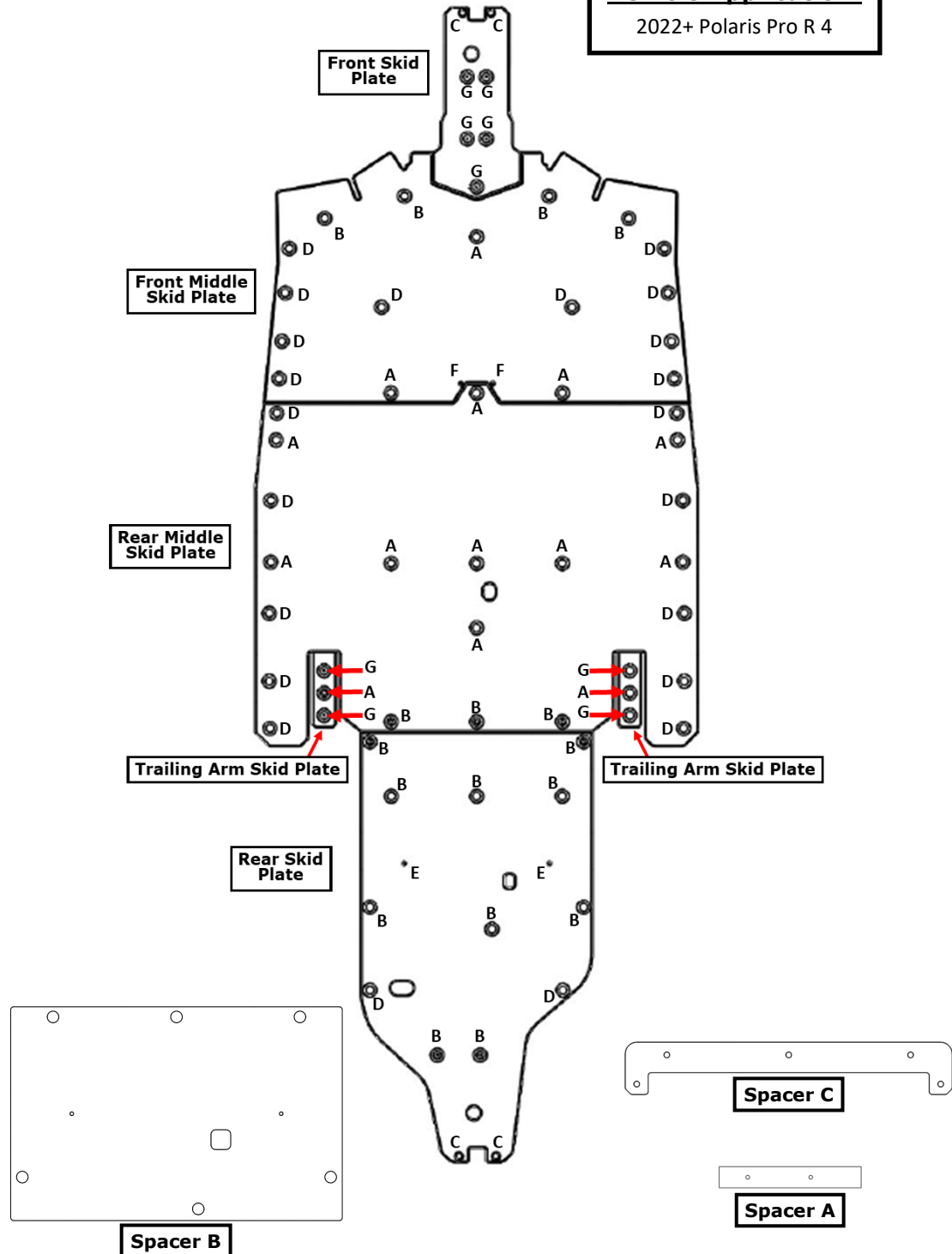
Attention: Before throwing any packaging away, make sure you have received all of the necessary hardware.

Hardware List:

<p>A</p>  <p>(14) Tusk Cup Washer (14) M6 x 20mm Hex Flange Bolt</p>
<p>B</p>  <p>(17) Tusk Cup Washer (17) M6 x 25mm Button Head Bolt</p>
<p>C</p>  <p>(4) Tusk Mini Cup Washer (4) M6 x 20mm Button Head Bolt (4) M6 Nyloc Flange Nut</p>
<p>D</p>  <p>(22) Tusk Cup Washer (22) 5/16" x 3/4" Self Tapping Screw</p>
<p>E</p>  <p>(2) M6 x 25mm Countersunk Bolts (2) M6 Nyloc Nuts</p>
<p>F</p>  <p>(2) M6 x 14mm Counter Sunk Bolts (2) Tee Nut Inserts</p>
<p>G</p>  <p>(9) Tusk Cup Washer (9) M8 x 25mm Hex Flange Bolt</p>
<p>(1) 9/32" Drill Bit</p> <p>(2) Trailing Arm Nut Plate</p> <p>(3) Front Nut Plate</p>

Tusk Quiet Glide Skid Plate Hardware Combination Diagram

Vehicle Application:
2022+ Polaris Pro R 4



INSTALLATION INSTRUCTIONS AND INFORMATION

Tusk Quiet Glide Skid Plate Polaris Pro R 4 Seat

Installation Instructions:

1. Raising your Pro R off of the ground is the easiest way to install your new Tusk Skid Plate. Automotive ramps are a safe and easy way to do this as shown in **FIG 1**. It is possible to perform this install without using ramps, but may be more difficult due to limited work space under the machine.
 2. Once the machine is ready, double check that the machine is stable and in park.
 3. Remove the OEM rear skid plate and set aside (this will not be needed). Remove the OEM main skid plate which wraps around the front, shown in **FIG 2**. You will be cutting off a portion of this skid plate that will be used later in the installation. New hardware has been provided for installation of the Tusk Skid Plate but it is smart to keep OEM hardware as replacements.
 4. Using a paint pen or masking tape, cut the line demonstrated in **FIG 3**. It is not critical that this is cut precisely as the cut will be covered up by the new Tusk Skid Plate. Repeat steps for both sides.
- ***Make sure that the two clamps **are not** cut off during this process, they will be used to secure the skid plate into the proper position. **FIG 4******
5. Deburr the edges of the skid plate that were cut using a piece of sand paper or a file. Reinstall the two cut off sections of the skid plate, they will snap into place and will create a nice transition piece for the new Tusk Skid Plate. Do not install any hardware into these two pieces at this time. Repeat steps for both sides. **FIG 5**



FIG 1



FIG 2

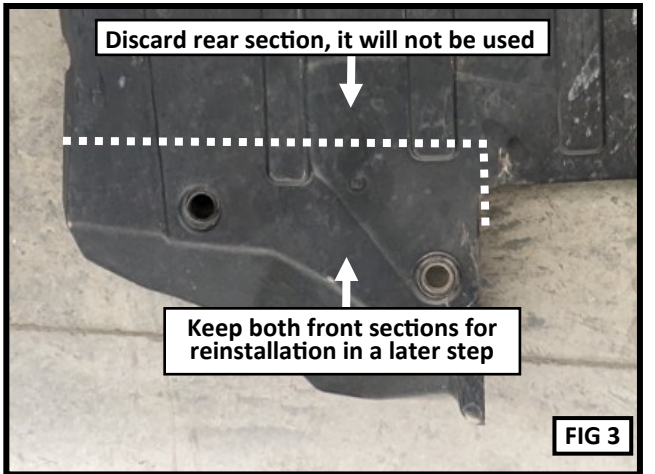


FIG 3

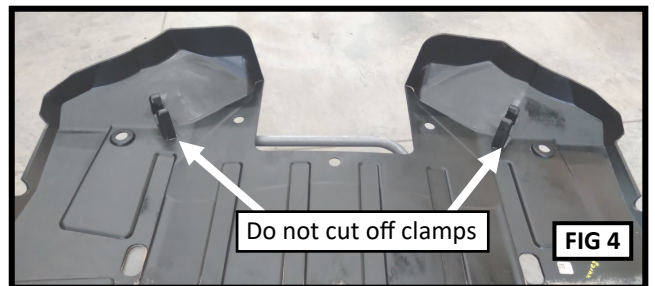


FIG 4

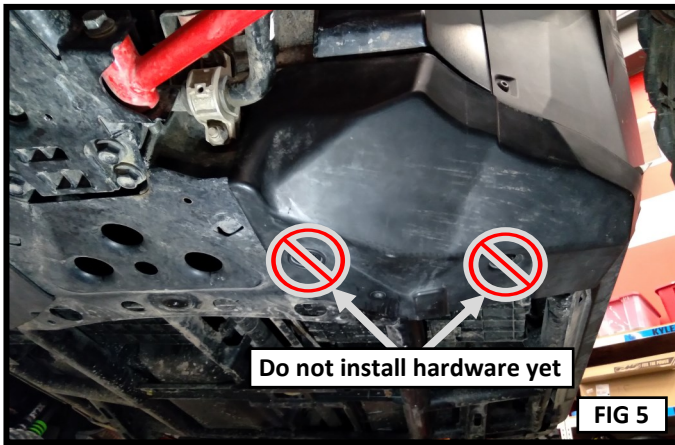


FIG 5

Do not install hardware yet

Discard rear section, it will not be used

Keep both front sections for reinstallation in a later step

Do not cut off clamps

Tusk Quiet Glide Skid Plate Polaris Pro R 4 Seat

6. Bolt **Spacer B** to the top of the **Rear Skid Plate** using **Hardware E**. Verify drain hole and bolt holes line up. Tighten nyloc nut until tight. **FIG 6**
7. Hold the skid plate up to the bottom of the machine. Lightly install the **Rear Skid Plate** using **Hardware B** through only the holes shared with **Spacer B**.
8. Place **Spacer C** between the front of the rear skid plate and the frame as shown in **FIG 6**. Install the front (2) **Hardware B** bolts in the skid plate through **Spacer C**.
9. **Spacer A** can be set over the two rear most Tusk Cup Washer holes. Orient the longer side as shown in **FIG 6**. Bolt together using (2) **Hardware B** through the skid plate and **Spacer A**.
10. Make sure all (12) **Hardware B** in the Rear Skid Plate is only lightly installed. The skid plate should still be able to be adjusted. This will be tightened later.
11. Install the **Trailing Arm Nut Plate** into the trailing arm mounts in the frame as shown in **FIG 7**. Lightly bolt the **Trailing Arm Skid Plate** to the frame from the middle bolt hole using **Hardware A**. The longer side of the skid plate should face forward so it can slide under the Rear Main Skid Plate once installed. Align the rear of the Trailing Arm Skid Plate with the back edge of the trailing arm frame mounts. Use (2) **Hardware G** to bolt the front and rear remaining holes in the skid plate to the nut plate. All 3 bolts in the trailing arm skid plate can be fully tightened. Repeat for other side.
12. Using **Hardware F**, set (2) **Tee Nut Inserts** over the holes in the backside of the **Rear Middle Skid Plate**. Lightly hammer the nut inserts into the skid plate.

FIG 8

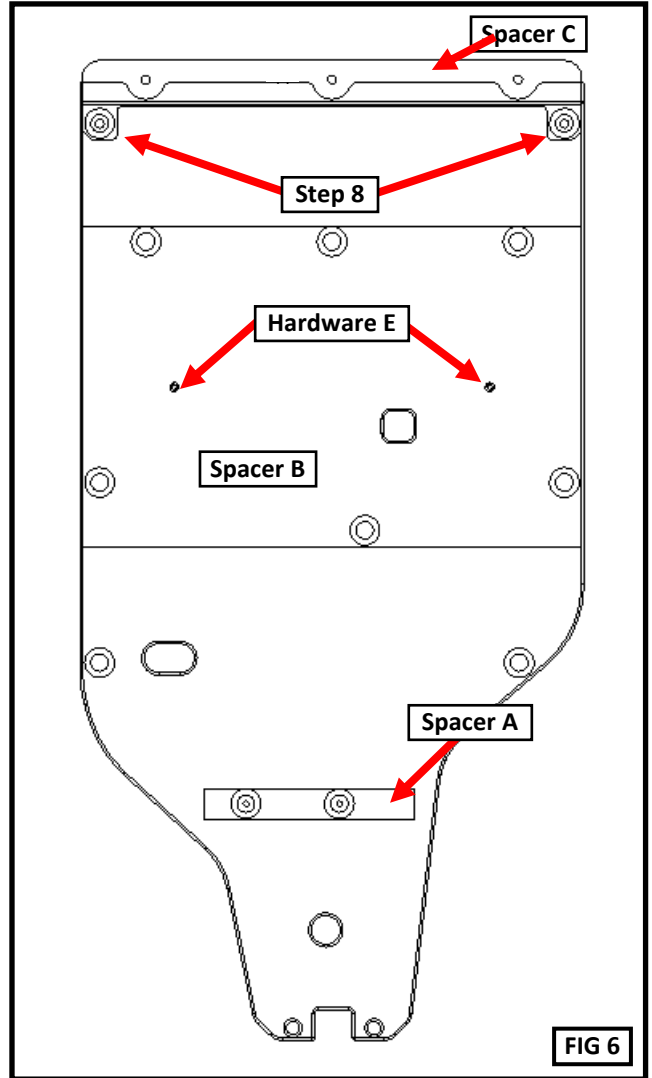


FIG 6

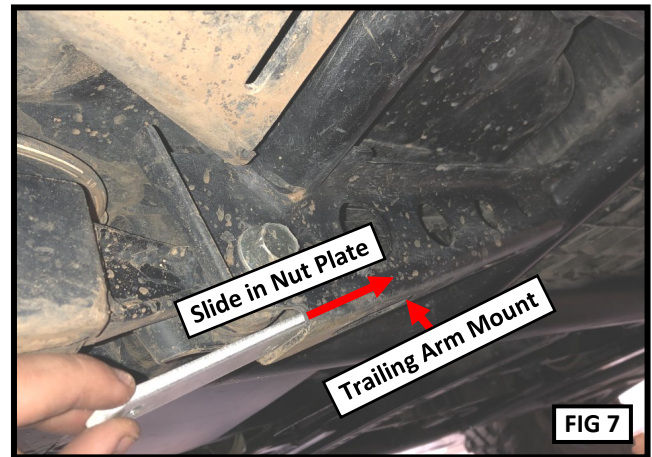


FIG 7



FIG 8

Tusk Quiet Glide Skid Plate Polaris Pro R 4 Seat

13. Loosely install the **Rear Middle Skid Plate** using **(9) Hardware A**. Use **(3) Hardware B** for the bolts passing through **Spacer C**.
14. Loosely install the **Front Middle Skid Plate** using **(3) Hardware A**.
15. Use **(4) Hardware B** where the skid plate covers the original skid plate that was cut in Step 4.
16. Using the bolts in **Hardware F**, bolt through the Front Middle Skid Plate into the Tee Nut Inserts in the Rear Middle Skid Plate.
17. Set the **(3) Front Nut Plates** over the frame. The front two nut plates will use the outside two bolt holes. The rear nut plate uses only the center bolt hole. **FIG 9 and 10**
18. Bolt the **Front Skid Plate** to the nut plates using **(5) Hardware G**.
19. Next you will need to adjust the skid plates for optimal fit. With all hardware still loose, adjust the Front Skid Plate, Front Middle Skid Plate, Rear Middle Skid Plate, and Rear Skid Plate until they fit to each other and to the machine well. When an acceptable fit is achieved, tighten all **A**, **B**, and **F** hardware.
20. Locate the provided **9/32" Drill Bit**. A marker, center punch, hammer, and drill will be required for the rest of the installation.

Caution: When drilling throughout the installation, always wear safety equipment, always ensure that there are no obstructions in front or behind what you are drilling through.
21. Mark, punch, and drill all location **C and D** using the 9/32" Drill Bit.
22. Install all **(22) Hardware D** into the drilled holes. It is recommended that power tools are not used to install these bolts.

Note: Hardware **D** bolts are self tapping, it is important to ensure when tightening that they are not screwed in at an angle and that the bolts are not over tightened.
23. Finally, install **Hardware C** into the front and rear skid plates. Tighten until snug.
24. Periodically check that no hardware has loosened.

Enjoy your Tusk Quiet Glide Skid Plate!

